



BIDWELL MEWS

HOUGHTON REGIS



The Burton

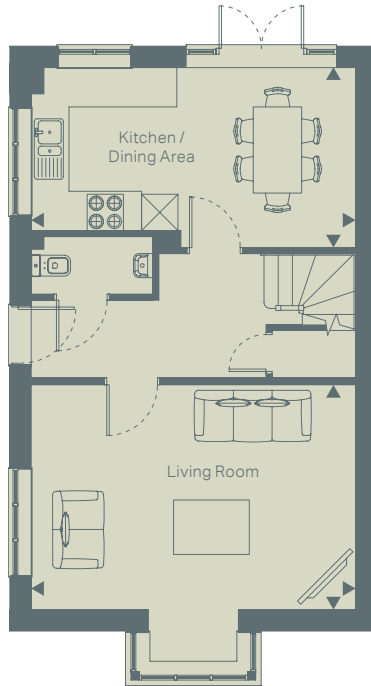
3 bedroom

Plots 64, 79 & 100

The Burton

3 bedroom

Plots 64, 79 & 100



Ground Floor

Living Room

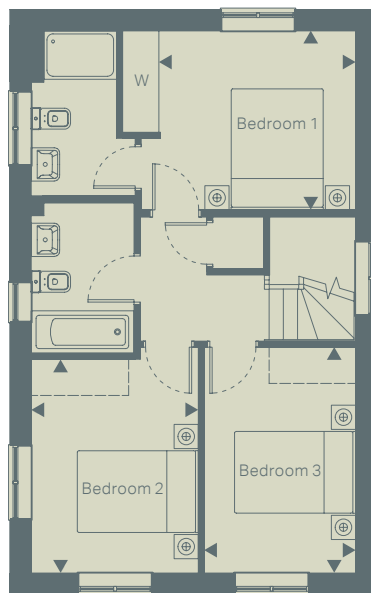
5.36m x 3.71m

17' 7" x 12' 2"

Kitchen / Dining Area

5.36m x 2.97m

17' 7" x 9' 8"



First Floor

Bedroom 1

3.25m x 2.95m

10' 7" x 9' 8"

Bedroom 2

3.53m x 2.76m

11' 6" x 9' 0"

Bedroom 3

3.73m x 2.49m

12' 2" x 8' 2"